

OBJECTS

These cards are photographs of artworks created by people from different cultures and time periods.

- Look up! See the silhouettes, or shapes, that circle the Learning Center. Match each card to its silhouette.
- Read and discuss the information on the back of the cards.

TIMELINE

FIND THIS



THINK ABOUT THIS

c. 525 BC

Greece

Psiax

Hercules Strangling the Nemean Lion

Attic black-figured amphora from Vulci

19 inches high

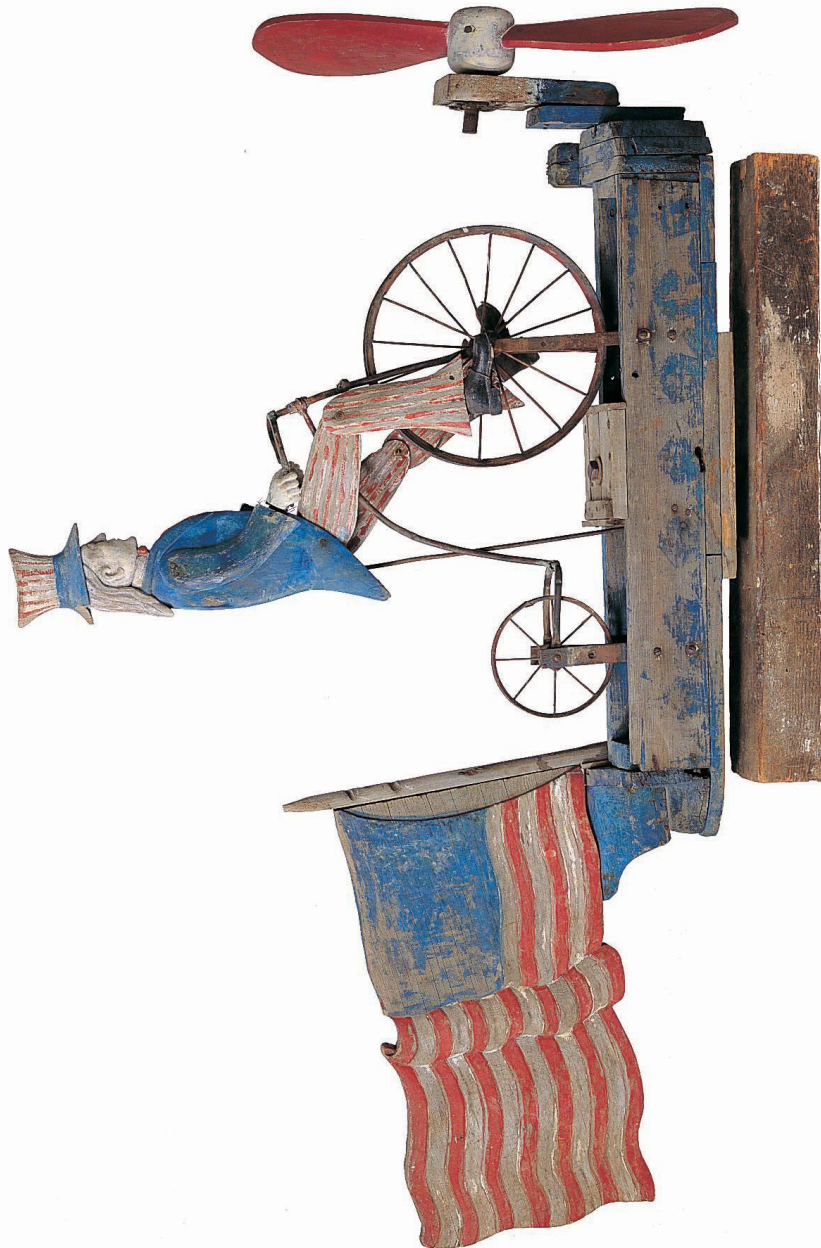
Civic Museum, Brescia, Italy

Match this artwork to its silhouette in the Learning Center.

The shape of this amphora or vase is perfectly balanced. The figures on the vase tell a story with a beginning, middle, and end.

Can you imagine what happened around the other side of the vase to tell the rest of the story?

FIND THIS



THINK ABOUT THIS

1880 – 1920

United States

Uncle Sam Riding a Bicycle

Polychromed wood, metal

37 x 55 x 11 inches

American Folk Art Museum, New York

Match this artwork to its silhouette in the Learning Center.

When the propeller on this folk art piece moves Uncle Sam's legs go up and down.

How would you make a moveable sculpture?

FIND THIS



THINK ABOUT THIS

c. 1905

France

Paul Cezanne

Still Life with Apples and Peaches

32 x 40 inches

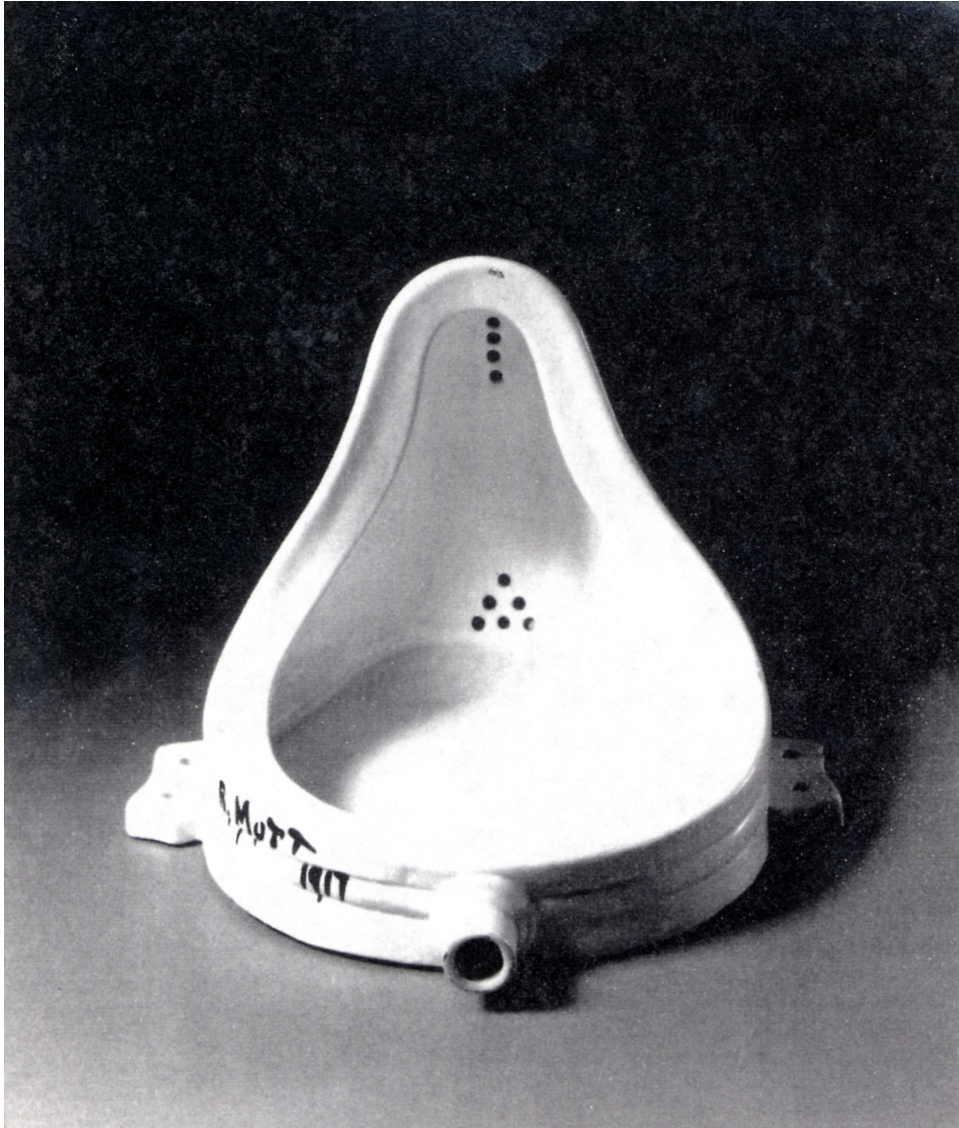
National Gallery of Art, Washington D.C.

Match this artwork to its silhouette in the Learning Center.

Cezanne used fruit and favorite objects from his home to create still-life paintings.

Do you feel the weight of the apples and peaches just by looking at them?

FIND THIS



THINK ABOUT THIS

1917

France

Marcel Duchamp

Fountain

Ready-made porcelain urinal

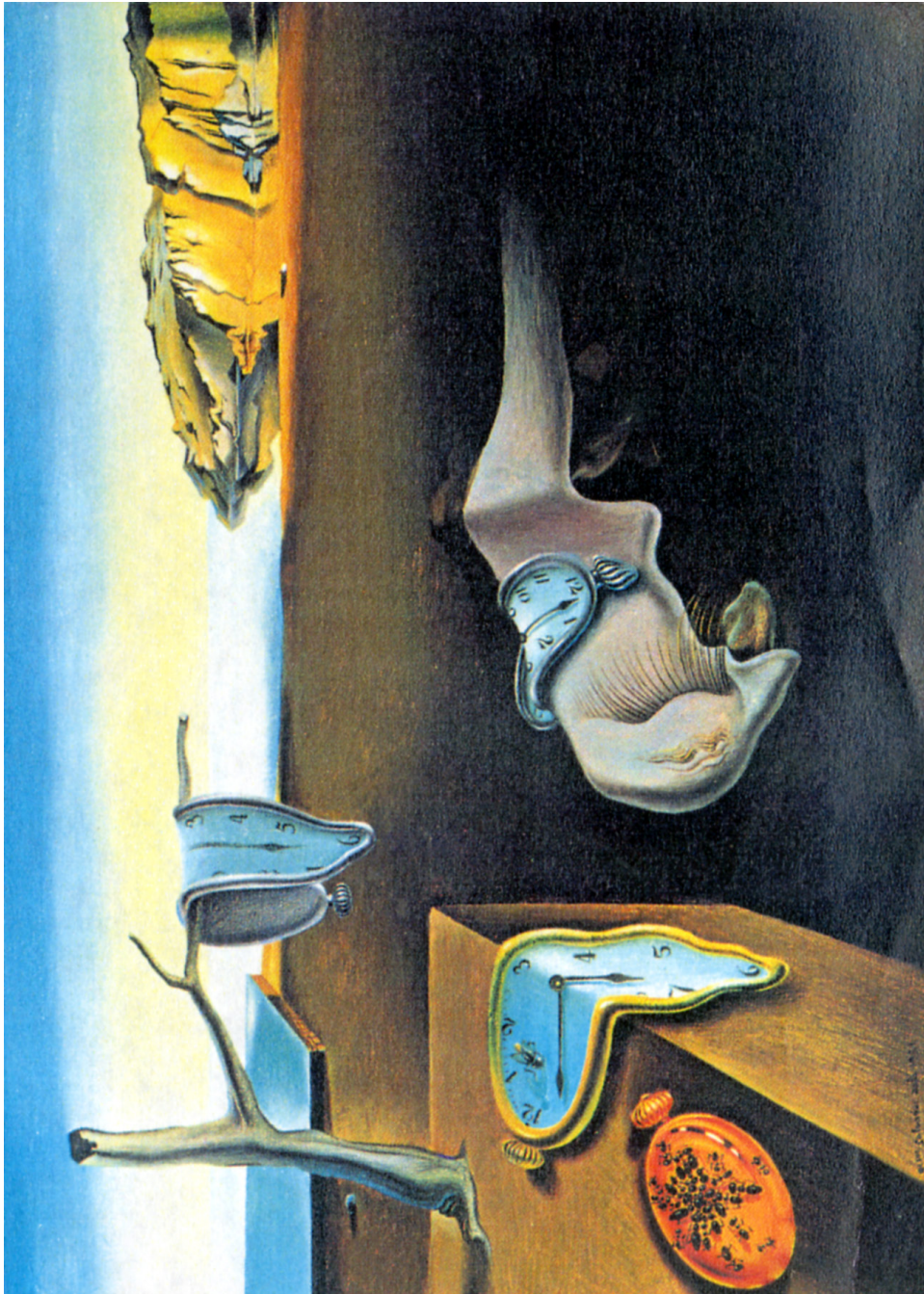
23 x 18 inches

Match this artwork to its silhouette in the Learning Center.

Duchamp liked to make fun of how seriously some people take art. He also thought art cost too much money. He was the first artist to use found objects as art. He called them “ready-mades.”

Do you think art should be able to make jokes?

FIND THIS



THINK ABOUT THIS

1931

Spain

Salvador Dalí

The Persistence of Memory

Oil on canvas

9 x 13 inches

Museum of Modern Art, New York

Match this artwork to its silhouette in the Learning Center.

Salvador Dalí used his well-developed painting skills to create pictures of dreams. This is called Surrealism.

What story can you tell about this picture?

FIND THIS



THINK ABOUT THIS

1942

United States

Maria Martinez

Jar

Clay

13 inches high

Private collection

Match this artwork to its silhouette in the Learning Center.

The design on this pot is the horned water serpent, a symbol of Thanksgiving for water and rain for the Pueblo people.

How many geometric shapes do you see in this design? Try drawing one of your favorite creatures using only squares, circles, triangles and rectangles.

FIND THIS



THINK ABOUT THIS

1954

United States

Jasper Johns

Flag

Encaustic and collage on canvas

42 x 60 inches

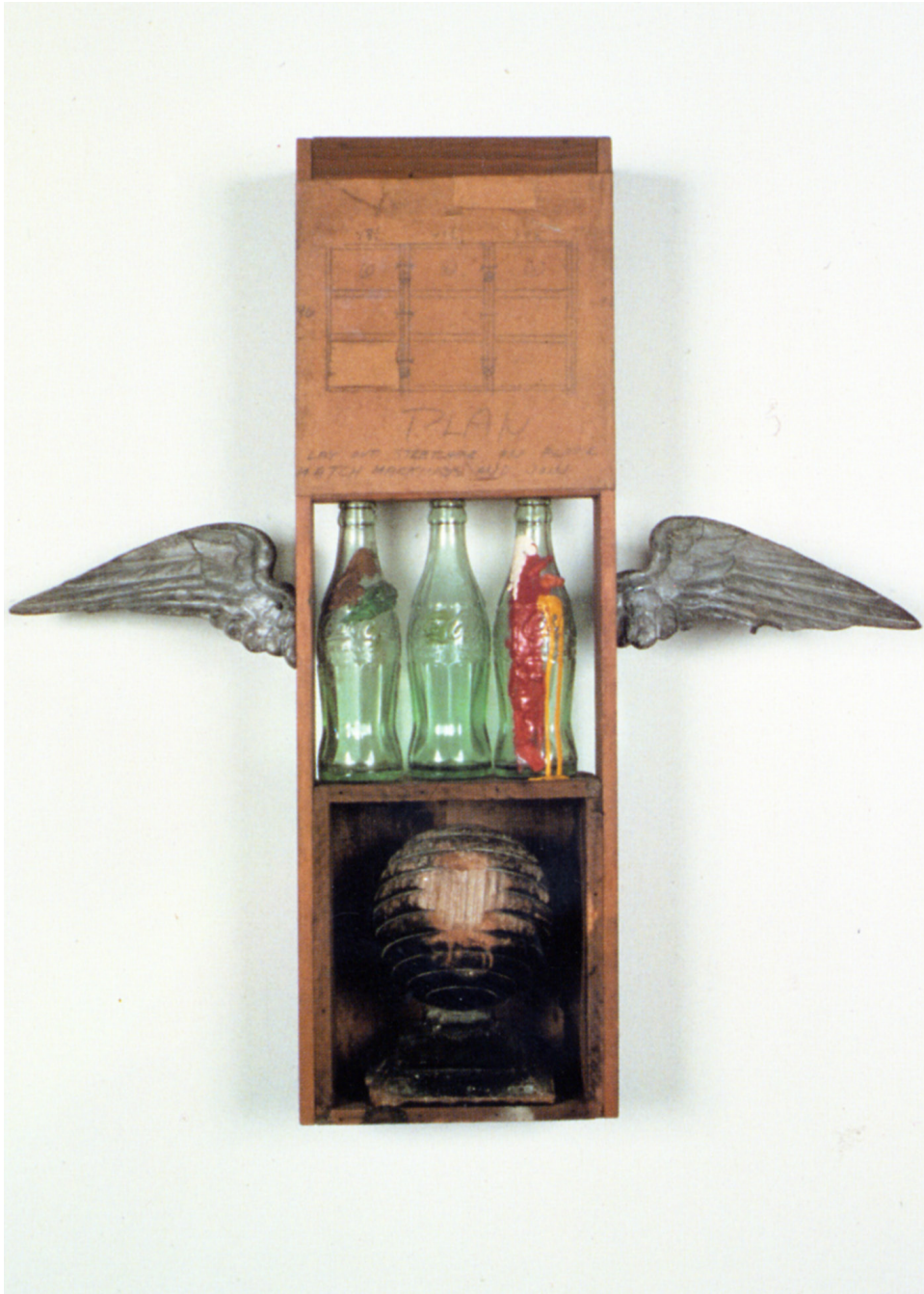
Museum of Modern Art, New York

Match this artwork to its silhouette in the Learning Center.

In this painting Johns used a very familiar and symbolic object as his subject.

Does the thickly painted surface change the way you normally see the American flag?

FIND THIS



THINK ABOUT THIS

1958

United States

Robert Rauschenberg

Coca Cola Plan

Combine painting

27 x 25 x 5 inches

The Museum of Contemporary Art, Los Angeles

Match this artwork to its silhouette in the Learning Center.

This artist often uses everyday objects that surround him in his artwork.

What seems particularly American about this work?

FIND THIS



THINK ABOUT THIS

1965

United States

Andy Warhol

Campbell's Soup Can

Acrylic, spray paint, and silkscreen ink on linen

Match this artwork to its silhouette in the Learning Center.

This artist used soup cans, Brillo boxes, and famous faces as his subject matter.

Does this painting remind you of an advertisement?